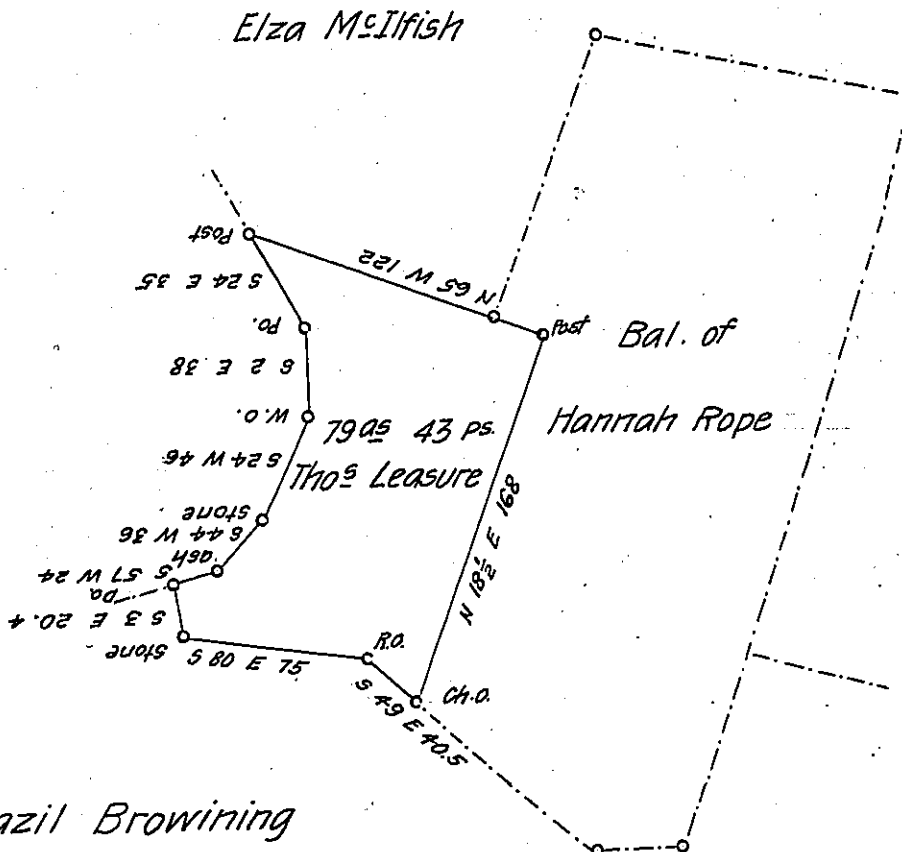


Saml Spurgeon  
Now  
Thos Leasure



Bazil Browning  
in Right of Jane Rope

Situate in Southampton township Bedford County Containing 79 as  
 43 perches and the usual allowance of Six per Cent for Roads &c. Surveyed for  
 Thos Leasure being a part of a larger tract of land containing 362 as 12 ps. &  
 allow. Originally surveyed on Warrant to Hannah Rope dated 12<sup>th</sup> day of Mar.  
 1794

Saml Ketterman C.S

To

J. M. Campbell Esqr

S. G.

IN TESTIMONY that the above is a copy of the original remaining on file in  
 the Department of Internal Affairs of Pennsylvania, made  
 conformably to an Act of Assembly approved the 16th day of  
 February, 1833, I have hereunto set my Hand and caused  
 the Seal of said Department to be affixed at Harrisburg,  
 this fifteenth day of November 1906

*Haac R Brown*  
 Secretary of Internal Affairs.